



# A Guide for Students & Short-Term Personnel

## WHY WORK WITH ANIMALS

The scientific and medical knowledge developed through work with animals has saved countless lives and improved health outcomes for both humans and animals. *Consider the following...*

**Required for clinical studies**  
U.S. law requires that all new drugs, medical devices, and procedures be evaluated in animals before human clinical trials can begin.

**Critical medical contributions**  
Cancer and disease treatments, organ transplants, heart bypass procedures, and numerous drug therapies have all resulted from animal models.

**Mammals are very similar**  
Animals, such as mice and rats, share ~95% of their genes with humans, meaning people and animals are susceptible to many of the same medical conditions.

**Companion animals benefit**  
Many discoveries, including the feline leukemia and rabies vaccine(s), benefit companion animals as well as animals in the wild.

## A BRIEF INTRODUCTION

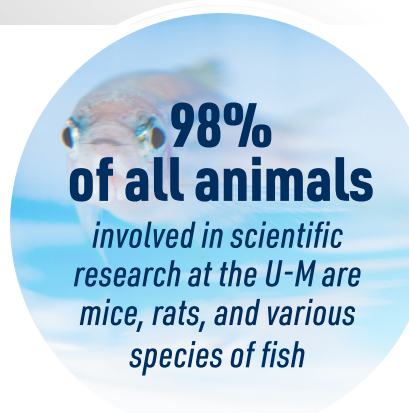
As a top public university, the University of Michigan (U-M) has been entrusted with the important obligation to ensure that no animal is used needlessly and that animals are spared all unnecessary pain and distress.

The U-M Animal Care & Use (ACU) Program supports the U-M community in its pursuit of impactful science to benefit both human and animal health by fostering a culture of excellence and compassion, responsible conduct, and a shared commitment to upholding the highest animal welfare standards in all aspects of research and instruction.

The ACU Program adheres to all applicable federal, state, and local rules and regulations, which require a review of animal activities to ensure the humane treatment and judicious use of vertebrate animals. In addition, the U-M has been continuously accredited by AAALAC International since our first voluntary inspection in 1971. Our approach also goes beyond strict adherence to all required guidelines.

We are firmly committed to the **“Three Rs”**:

- Reduce** the number of animals used to the minimum required for the study,
- Replace** animals with less sentient or non-animal models whenever possible; and
- Refine** all practices to provide the best animal welfare possible.



## ABOUT OUR PROGRAM

The ACU Program is comprised of three units that touch virtually every facet of animal care and use at the U-M:

**Institutional Animal Care & Use Committee (IACUC)**

- Provides oversight for all projects using animals
- Ensures the ACU Program operates within all applicable policies, standards, and guidelines
- Reviews, approves, and monitors all animal use applications

**Animal Care & Use Office (ACUO)**

- Provides regulatory guidance and facilitates the development of programmatic policies
- Processes animal use protocols
- Coordinates IACUC inspections of all animal facilities/laboratories

**Unit for Laboratory Animal Medicine (ULAM)**

- Provides 24-hour veterinary care and management of all animal housing facilities
- Performs animal husbandry, including daily health checks
- Trains personnel on the proper care and use of research animals

## WHERE TO LEARN MORE

[animalcare.umich.edu](http://animalcare.umich.edu)


[animalcare.umich.edu/program-faqs](http://animalcare.umich.edu/program-faqs)

[animalcare.umich.edu/our-impact](http://animalcare.umich.edu/our-impact)

## WORKING SAFELY WITH ANIMALS

The Principal Investigator is responsible for ensuring individuals working with animals under their advisement are appropriately trained, apprised of any occupational hazards or risks associated with animal care facilities, and adhere to applicable regulatory requirements and U-M IACUC policies.

Although minimal, there are some hazards associated with working around animals. **Download the *Occupational Hazards & Safety Concerns Associated with Animal Care Facilities* brochure ([myumi.ch/Nx1v3](http://myumi.ch/Nx1v3)) for more information.**

**Need Medical Attention?** 

If an incident requiring medical treatment occurs

- **Short-Term Personnel** – Should contact their direct supervisor and proceed to the nearest ER
- **Students** – should contact University Health Service ([uhs.umich.edu](http://uhs.umich.edu))

## REQUIREMENTS FOR PERSONNEL WORKING WITH ANIMALS

Individuals not listed on an IACUC approved protocol are subject to limitations when working with animals. Observers must not handle animals and are required to be escorted at all times by a member of ULAM or an individual on an IACUC approved protocol. Short-term personnel may handle animals, but must be supervised by a member of ULAM or an individual on an IACUC approved protocol.

Definitions for each type of personnel, training requirements, and information on submitting requests for short-term personnel can be found in the [Policy on the Classification and Expectations of Personnel Involved with Animal Activities](#). Additionally, all individuals should abide by all instructions on posted signage, and remain cognizant of important security considerations (no "tailgating" through doorways or propping doors).

## COMMUNICATING ABOUT WORK INVOLVING ANIMALS

Content (stories, images, videos, social media posts, etc.) that mentions the use of animals in research, teaching, or training, even if intended for a scientific or internal audience, always has the potential to draw negative and unintentional attention from groups that oppose any projects involving animals. These groups have been known to take these materials out of context, or even actively misrepresent or distort them to depict universities and scientists in a bad light.

All individuals are strongly encouraged to consult, and partner with, both the ACU Program ([acu-media@umich.edu](mailto:acu-media@umich.edu)) and their respective communications offices (Michigan Medicine Department of Communication, Michigan News Office, and/or the communicator that covers their department/school/college), on any aspect of communication regarding animals.

## REQUESTING VETERINARY CARE

Ill or injured animals must be reported to ULAM veterinary personnel as soon as the condition is noted. **The responsibility of contacting veterinary personnel falls to whomever finds the ill or injured animal.** Detailed contact information can be found on [Obtaining Veterinary Care](#) signs posted throughout all animal care facilities.

**Monday – Friday**  
**6:00 AM – 5:00 PM**  
 Call ULAM at (734) 936-1037

**Monday – Friday**  
**5:00 PM – 6:00 AM**  
 Call DPSS at (734) 763-1131

**Weekends & Holidays**  
 Call the on-site Vet Tech  
 at (734) 936-1037\*  
\* If the Vet Tech can't be reached, call DPSS at (734) 763-1131

## REPORTING ANIMAL WELFARE CONCERNS

Any member of the faculty, staff, student body, or public having reason to question the treatment of animals at U-M should report any suspected cases of animal abuse, misuses, or mistreatment immediately. **U-M will not tolerate any misuse or mistreatment of animals.**

**Animal Concern Hotline**  
 (734) 763-8028 • [acuoffice@umich.edu](mailto:acuoffice@umich.edu) • [animalcare.umich.edu/hotline](http://animalcare.umich.edu/hotline)

Anonymous reports are acceptable, and all are investigated. Federal laws prohibit discrimination or reprisal for reporting violations of standards and regulations promulgated under the Animal Welfare Act.

## CONTACT US



**Animal Care & Use Office**  
 (734) 763-8028  
[acuoffice@umich.edu](mailto:acuoffice@umich.edu)



**Unit for Laboratory Animal Medicine**  
 (734) 764-0277  
[ulam-questions@umich.edu](mailto:ulam-questions@umich.edu)



**Environment, Health & Safety**  
 (734) 647-1143  
[ehs-animalsafety@umich.edu](mailto:ehs-animalsafety@umich.edu)