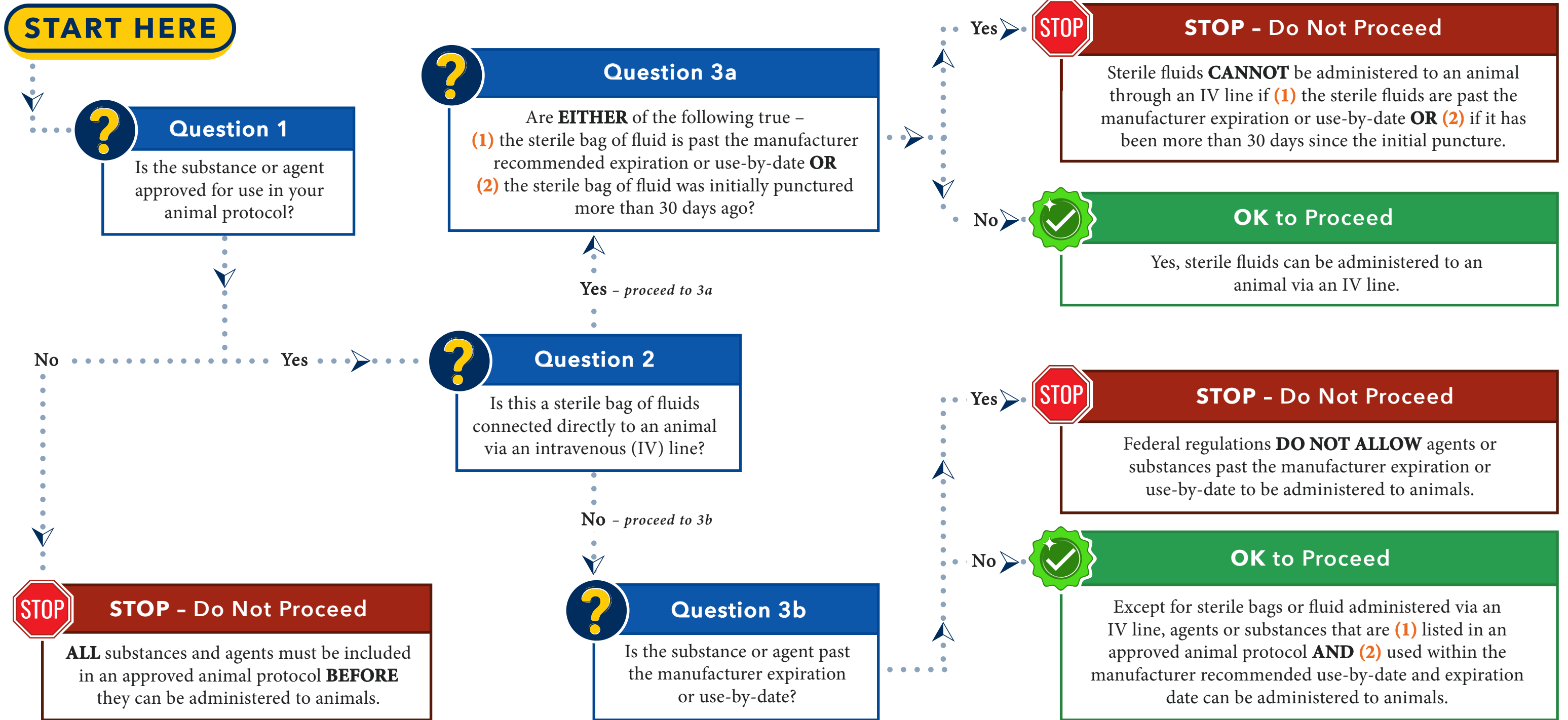


# SCENARIO - Administering a Substance or Agent to an Animal

The Animal Care & Use Program has created the following decision tree to help members of the U-M research community navigate the proper use of substances, agents, medical materials, and drugs with animals. Please [refer to the Animal Care A-Z website](#) for more information about how the terms below (e.g., substance, agent, use-by-date, expiration date, etc.) are defined for regulatory/compliance purposes.



Questions about the use of specific drugs or other medical materials in animals should be directed to your [ULAM Faculty Veterinarian](#). For assistance with establishing a system to monitor for expired materials in your laboratory, please contact the Quality Assurance Team in the Animal Care & Use Office at [ACUO-RCAs@umich.edu](mailto:ACUO-RCAs@umich.edu).

Questions?

