

University of Michigan  
ULAM

# Health Checking with an Enviropak

## What if you see ...?

Follow the flowchart found in the health check SOP to assess overall cage health when health checking with an enviropak. Often clues from the cage will indicate the health status of the mice within the cage.

Listed below are easily identifiable indicators of nesting behaviors in mice. This is neither a comprehensive nor specific list, and as such, other observations should be taken into account when assessing health status in mice. Please contact ULAM training core for additional assistance with identification of a healthy cage.

### Nest Quality



**Good Nest**  
Well Formed  
Dome



**Poor Nest**  
Flat/Not Well  
Formed

### Cage Organization



**Good Cage Organization**  
Nest is located  
away from  
urine site



**Poor Cage Organization**  
Nest is  
interspersed  
with soiled  
materials

### Social Behavior



**Good Social Behavior**  
Animals nesting  
together



**Poor Social Behavior**  
Animals nesting  
separately

### Tips

**Singly housed mouse or weanlings**  
Tear Enviropak in half to prevent nesting inside



**Urine stained and flat nest**  
\*Monitor Closely for Aggression



**Using enrichment items?**  
\*If not, monitor closely for health issues



## 24 Hour Nest Progression for 5 Adult C57bl/6 Mice

\*Different Strains and Cage Densities May Vary

Well Formed Dome,  
Enviropak Integrated  
Into Nest



0 Hour



1 Hour



2 Hour



3 Hour



4 Hour



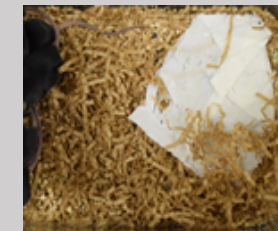
5 Hour



6 Hour



7 Hour



8 Hour



24 Hour