

# CO<sub>2</sub> Mouse Euthanasia Pre-Procedure Planning & Consolidation Guidelines

If consolidation is necessary, follow limits outlined in the full guidelines to reduce the potential for stress.

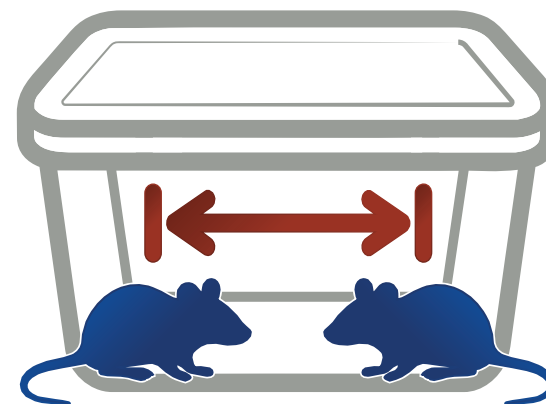
**It is preferable to use the animals' home cage for euthanasia whenever possible.**

Set aside enough time for transport, procedure, and carcass disposal. Animals **CANNOT** be left **ALONE** – at any point – during the process.

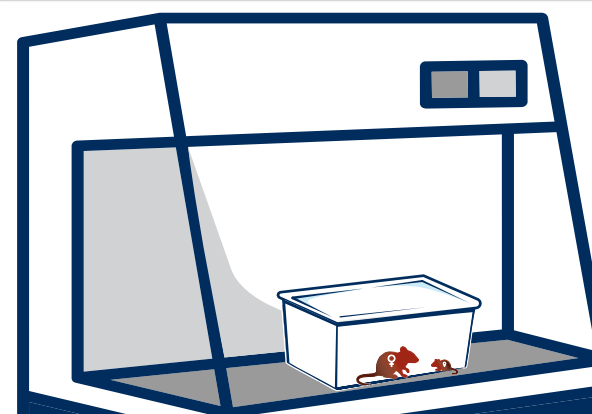


Ensure animals have **ample space to move** and assume normal postures.

**≤ 10 mice** in a small mouse cage  
**≤ 25 mice** in a large mouse / small rat cage



Weaned male mice and animals that have previously been separated for fighting **MUST NEVER** be consolidated.



If necessary, **female mice and non-weaned pups may be consolidated** in the housing room using the LFH or BSC.

For detailed instructions, review all rodent euthanasia guidelines on Animal Care A-Z ([animalcare.umich.edu/rodent-euth](http://animalcare.umich.edu/rodent-euth))