

University of Michigan
ULAM

Health Checking with an Enviropak

What if you see ...?

Follow the flowchart found in the health check SOP to assess overall cage health when health checking with an enviropak. Often clues from the cage will indicate the health status of the mice within the cage.

Listed below are easily identifiable indicators of nesting behaviors in mice. This is neither a comprehensive nor specific list, and as such, other observations should be taken into account when assessing health status in mice. Please contact ULAM training core for additional assistance with identification of a healthy cage.

Nest Quality

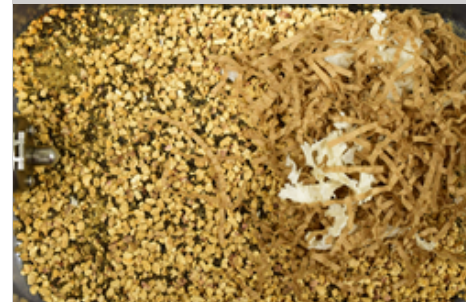


Good Nest
Well Formed
Dome



Poor Nest
Flat/Not Well
Formed

Cage Organization



Good Cage Organization
Nest is located
away from
urine site



Poor Cage Organization
Nest is
interspersed
with soiled
materials

Social Behavior



Good Social Behavior
Animals nesting
together



Poor Social Behavior
Animals nesting
separately

Tips

Singly housed mouse or weanlings
Tear Enviropak in half to prevent nesting inside



Urine stained and flat nest
*Monitor Closely for Aggression



Using enrichment items?
*If not, monitor closely for health issues



24 Hour Nest Progression for 5 Adult C57bl/6 Mice

*Different Strains and Cage Densities May Vary

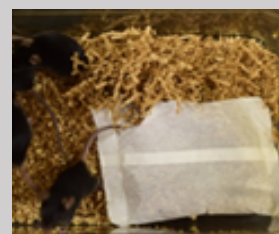
Well Formed Dome,
Enviropak Integrated
Into Nest



0 Hour



1 Hour



2 Hour



3 Hour



4 Hour



5 Hour



6 Hour



7 Hour



8 Hour



24 Hour